

VEHICLE EQUIPMENT

Overview



EVERYTHING FROM A SINGLE SOURCE WITH MANY ADVANTAGES TO YOU





Top quality from our own development and production.

There are several aspects to the quality of our vehicle equipment. Durability is one of these, ergonomics and efficient working procedures are others. In addition there is, among other things, low weight combined with maximum stability. In all, it amounts to maximum utility benefit – day in, day out and over a very long period.



Consultation and planning with a high degree of industry competence.

Our consultants come from different branches of the trade. With this experience and state-of-the-art planning software, we can tailor individual equipment quickly and without complications. This makes our our vehicle equipment much more than just "shelves on wheels". They are well thought out transport and work systems.



The priority is safety.

It goes without saying that as the driver of a transporter with some heavy material behind the driver's seat, you want to feel safe. You and your colleagues are well protected in our vehicle equipment, and the material you are transporting is optimally stowed. We conduct permanent tests in order to optimize all safety-relevant parts and technologies.



We are never far away from you.

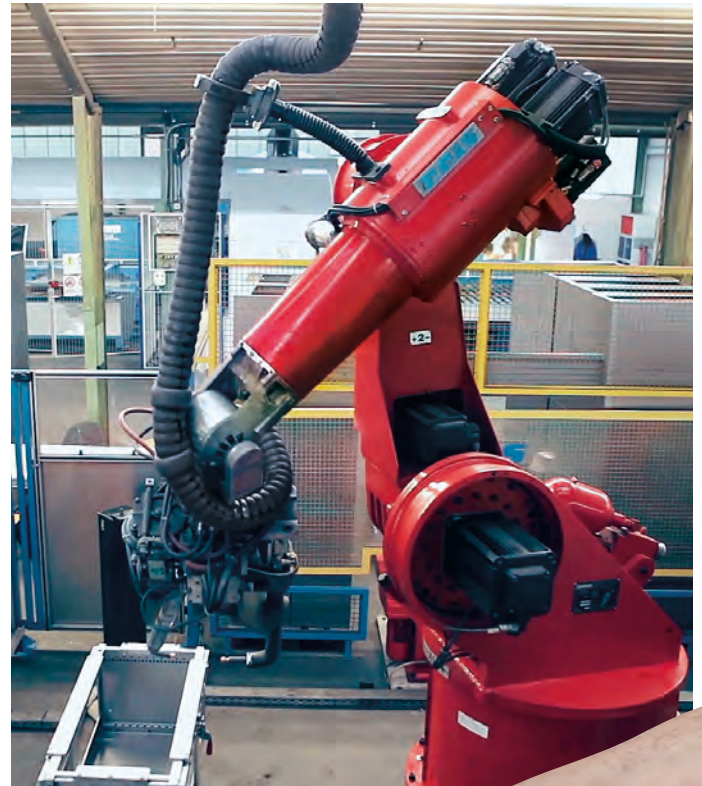
To us, closeness to the customer is more than just a slogan, and it also means much more than physical proximity and accessibility. We have branches all over the country and our sales specialists are at your service almost round the clock.

PRECISE PRODUCTION MAXIMUM QUALITY



Our vehicle equipment is developed in-house and is manufactured by a Würth Group subsidiary.

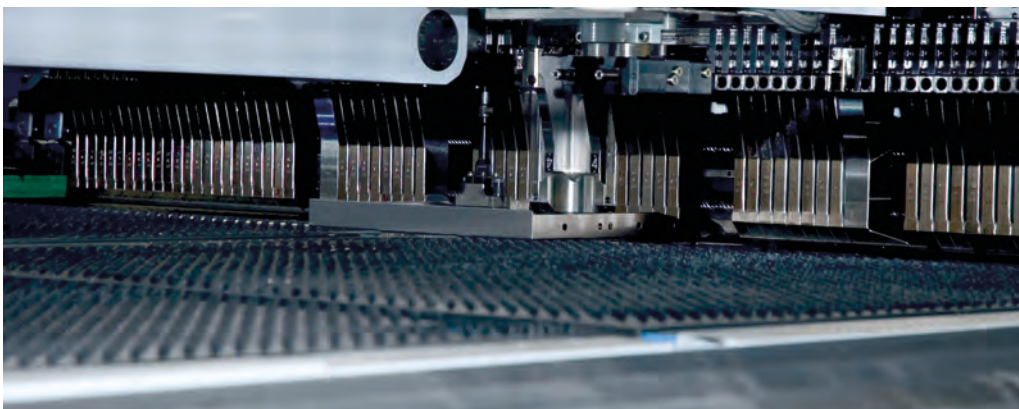
Decades of experience with customers from all branches of the trade and professionals are incorporated into the development of our systems. In production, they become a top-quality reality through the use of reliable materials. For this we have at our disposal state-of-the-art production systems such as fully-automatic punching and bending centers, as well as several spot-welding and welding robots. The result of this precision technology and the certification of the quality management system in accordance with ISO 9001 is a high-quality final product every time. In addition to development and production, we are constantly optimizing our environmental protection efforts. In powder coating for example, we use no solvents, and we combine lead-free and cadmium-free powder with responsible recovery.



Our own powder-coating system allows efficient, resilient and especially environmentally-friendly painting.



**AVAILABLE IN ALL
STANDARD RAL COLOURS**



In our state-of-the-art bending center, we manufacture vehicle equipment of the highest precision.

PERSONAL CONSULTATION INDIVIDUAL PLANNING



Due to the specific requirements of individual sectors and customers, the ideal vehicle equipment doesn't come "off the peg".

Our task is to optimise the space in the vehicle to suit your work procedures. To this end, your sales specialist will advise you in detail and will look for the best possible solution to suit your individual needs. We employ 3D planning to visualise your specifications precisely and unambiguously, and you get a clear picture of your future equipment solution. You can examine the implementation of the various solutions directly in our demonstration vehicles.



We use 3D planning to arrive at the ideal equipment solution for the customer quickly and without complications.



With many practical equipment details, we simplify work procedures and make life that little bit more comfortable.



For further information, visit www.orsymbol.com



MAXIMUM SAFETY **INNOVATIVE** **ENVIRONMENTAL** **MANAGEMENT**

Every day on the UK's roads there are thousands of vehicles with our equipment.

The drivers of the vehicles, as well as other road users, can be assured that all our efforts go into keeping them safe. Our vehicle equipment undergoes many tests, in addition to which we promote safety with load-securing products and seminars.

Besides safety, ecology is another permanent part of our company culture.

Würth environmental management has been certified since 1996. We always adhere to the principles of the social market economy, people's health and the environment. Which is why we are constantly improving our performances.

Find out more at wuerth.co.uk/Company/Quality & Compliance.



For our vehicle equipment, that means:

- Crash test for all equipment lines
- Assured pull values for all rail systems
- Marking the loading weight in the drawers
- Floor panels made from sustainable raw materials with the blue eco-angel
- Powder coating without solvent
- Tested products for securing loads
- Seminars at the Würth Academy on how to secure loads
- Hazardous materials management also for vehicles
- Cost center management for the vehicle

Find out more at: www.orsymbol.com

THE MODULAR VEHICLE EQUIPMENT MADE OF STEEL – EXTREMELY ROBUST FOR MAXIMUM LOAD- BEARING CAPACITY!

In sectors such as the building and civil engineering industry and finishing trades, the mechanical load on the vehicle equipment is particularly high. The modular vehicle equipment comprised of high-strength structural steel elements is ideal for these requirements. Maximum load-bearing capacity and stability are characteristic of this model as much as the individually achievable special solutions.





Just as robust as all the vehicle equipment, the pull-out work bench provides enough space for safe working.



Quick opening across the entire width. The functional drawer handle enables any drawer to be opened any closed anywhere – without the need to fumble around with small, inconvenient handles. The practical hinged flaps of the shelves are opened with a handle. Like the covers and the drawer handles, they are made of high quality anodized aluminium.



Storage box shelves make the storage of small parts in the transporter clear. The boxes fixed in the shelves provide order, and the patented front flap allows easy access.



Longitudinal modules provide convenient access from the side door.

THE VARIABLE VEHICLE EQUIPMENT MADE OF ALUMINIUM, STEEL AND PLASTIC FOR MAXIMUM INDIVIDUALITY WITH LOW WEIGHT!

The variable vehicle equipment can be adapted right down to the smallest detail to your working procedures and the stored items. This makes optimum use of the limited space on the vehicle. This maximum flexibility is achieved with five standard widths, three depths and 30mm height units. The intelligent material mix of aluminium, steel and plastic also saves on weight, and in turn this helps to keep fuel costs down.





Tension straps that can be fixed on the load securing rails, plus further accessories that can be secured on the upright frames add even more value to the system.



Safe storage and organization, many inserts and orderly sorting systems, along with the patented locking system for the drawers, make sure that your goods remain where they are supposed to be during transport.



The workbench always travels along, it takes up hardly any room in the vehicle itself, and at the place of use it can be pulled out as required with a few quick hand movements and secured with the quick action retainer.



Storage boxes providing organised and quick access.

VEHICLE EQUIPMENT ACCESSORIES



Ratchet for Airline Profile

Length: 1.000 mm

Art. No. 0963 80 204

Short designation: RZG1011

Length: 2.000 mm

Art. No. 0963 80 206

Short designation: RZG1000

Length: 4.000 mm

Art. No. 0963 80 208

Short designation: RZG4000



Push Pin Fit Strap

Length: 500 mm

Art. No. 0963 80 238

Short designation: KSG54

Length: 2.000 mm

Art. No. 0963 80 248

Short designation: KSG48



Rubber Strap

Length: 1.000 mm

Art. No. 0963 80 552

Short designation: LG1000

Length: 5.000 mm

Art. No. 0963 80 558

Short designation: LG5000

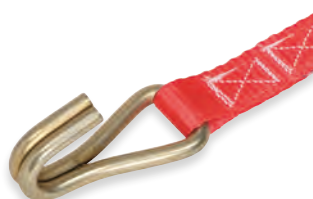


Standard Strap

Length: 2.000 mm

Art. No. 0963 80 241

Short designation: KSG20



Ratchet with Double J Hook

Length: 5.000 mm

Art. No. 0963 80 215

Short designation: RZH50



Hook Strap

Length: 5.000 mm

Art. No. 0963 80 217

Short designation: RZK50



Eyelet Kit

Art. No. 0963 80 961

Short designation: VZS



Lashing Eye

Art. No. 0963 80 312

Short designation: ZOA



Lashing Eye

Art. No. 0963 80 212

Short designation: ZOE

COMPRESSION POLES



Aluminium Compression Poles (Quick Adjustment)

Min Height 1,250 mm , Max Height 1,750 mm

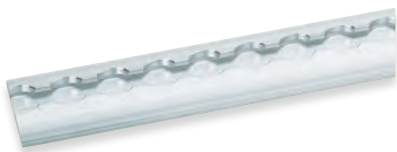
Art. No. 0963 99 006

Short designation: SS10

Min Height 1,550 mm , Max Height 2,050 mm

Art. No. 0963 99 002

Short designation: SS15



Lashing Rails

Length: 995 mm **Art. No. 0963 80 250**

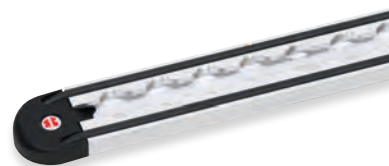
Short designation: ZSC995

Length: 1.495 mm **Art. No. 0963 80 251**

Short designation: ZSC1495

Length: 2.000 mm **Art. No. 0963 80 252**

Short designation: ZSC2000



Lashing Rail with Round Finish

Length: 1.000 mm **Art. No. 0963 80 263**

Short designation: RSZSB1000

Length: 1.500 mm **Art. No. 0963 80 253**

Short designation: RSZSB1500

Length: 2.000 mm **Art. No. 0963 80 254**

Short designation: RSZSB2000



Storage Net with Flat Hook

Dimensions (W x L) 1200 x 1800 mm

Art. No. 0963 80 315

Short designation: LNR



Storage Net

Dimensions (W x L) : 730 x 1240 mm

Art. No. 0963 80 319

Short designation: LNR4



Storage Net with Airline Lashing

(W x L) : 730 x 1240 mm

Art. No. 0963 80 318

Short designation: LNR3



Gas Bottle Holder Kit

Depth: 380 mm

Art. No. 0963 80 205

Short designation: GH11

Depth: 450 mm

Art. No. 0963 80 200

Short designation: GH10

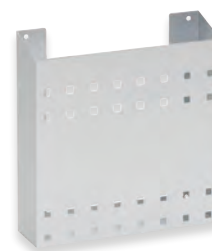


Hose Holder

Dimensions (W x H x D) : 250 x 115 x 107 mm

Art. No. 0693 80 981

Short designation: SHM



Storage Compartment

Dimensions (W x H x D) : 300 x 321 x 85 mm

Art. No. 0963 44 002

Short designation: OT02



Aluminium Can Holder

Dimensions (W x H x D) 350 x 121 x 72 mm

Art. No. 0963 80 818

Short designation: DH5



Paper Roll Holder with Paper

Dimensions (W x H x D) : 293 x 205 x 200 mm

Art. No. 0963 99 074

Short designation: PRCR1



Water Canister with Holder

Content : 16 litre

Dimensions (W x H x D) : 175 x 420 x 280 mm

Art. No. 0963 80 821

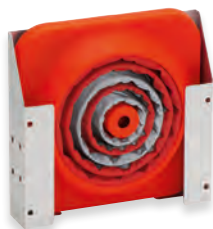
Short designation: KG16



2 kg ABC Fire Extinguisher

Art. No. 0963 80 900

Short designation: FL1



Flashing Traffic Code Foldable with Holder

Dimensions (W x H x D) 283 x 283 x 63 mm

Art. No. 0963 99 073

Short designation: PH72



Vice

Art. No. 0963 50 003

Short designation: PS120

Turntable Type

Art. No. 0963 50 013

Short designation: DT120



Aluminium Case

Dimensions (W x H x D) : 432 x 277 x 335 mm

Art. No. 0963 80 729

Short designation: AB29



Transport Stacking Containers

Dimensions (W x H x D): 400 x 210 x 300 mm

Art. No. 0963 80 772

Short designation: TK421

Lid

Art. No. 0963 80 776

Short designation: TKD4



Transport Stacking Containers

Dimensions (W x H x D) : 600 x 210 x 400 mm

Art. No. 0963 80 774

Short designation: TK621

Lid

Art. No. 0963 80 777

Short designation: TKD6



Halogen Work Light

Magnetic

Art. No. 0963 80 915

Short designation: ASM1

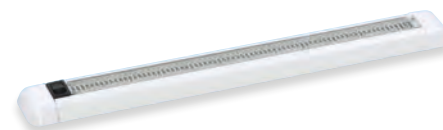


Halogen Rotating Beacon

Magnetic

Art. No. 0963 80 918

Short designation: RKL2



LED Indoor / Beacons 12 V

Dimensions (L x H) : 365 x 20 mm

Art. No. 0963 80 985

Short designation: FLT15

Installation kit

Art. No. 0963 80 901

Short designation: ES1

VEHICLE EQUIPMENT FOR HIGHEST DEMANDS

The two lateral windows of the hardtop provide for access to two drawer modules containing two drawers each.



The rear offers a fold-up rear cover and it is possible to fit a complete workshop.



EXAMPLES OF USE



VEHICLE EQUIPMENT

©Würth UK Ltd. All rights reserved in all media.

No part of this catalogue may be reproduced in any form, copied or stored electronically, whole or in part without prior written permission. Every effort has been made to verify all information. Products may vary in appearance from those pictured.

The information expressed is intended as a recommendation only, based on our tests and experience. However, we cannot accept any responsibility for results in individual cases because of the wide variety of applications as well as storage and processing conditions beyond our control. This also applies when making use of our technical and commercial customer service which is supplied free of charge and without obligation. We always recommend that you carry out individual tests. We guarantee the consistent quality of our products. Subject to technical changes and developments. Würth UK Limited cannot accept responsibility for any errors or omissions or for any losses that may arise as a result.

Reproduction only with permission of
MWV-SC-KD-1'04/11

We reserve the right to make product changes at any time that we feel provide a quality improvement, even without prior announcement or notification.
Illustrations may be example illustrations that may differ in appearance from the goods supplied. Errors excepted. We do not assume liability for printing errors. Our general terms and conditions apply.

Gary Hobson

Vehicle Equipment Specialist

Tel: 07876138126

Email: gary.hobson@wurth.co.uk

Midlands, East Anglia, North & Scotland

Würth UK Ltd

1 Centurion Way • Erith • Kent • DA18 4AE

T: 03300 555 444 • F: 03300 555 666

www.wurth.co.uk • info@wurth.co.uk



www.facebook.com/wurthuk



[@wurthuk](https://twitter.com/wurthuk)

